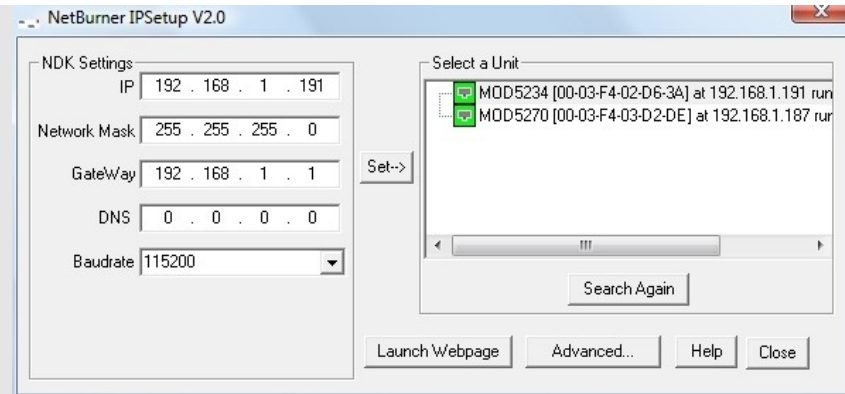


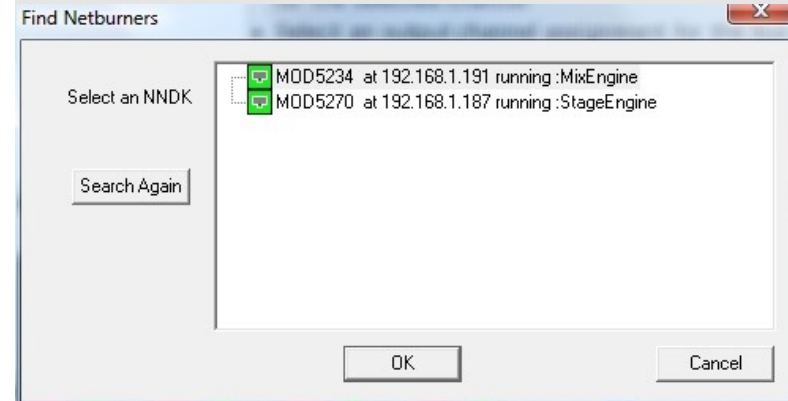
How to Upgrade the D-Stage Firmware

Managing IP Addresses

- 1
 - Connect the D-Stage to the same network as the PC hosting the control programs
 - It is common to connect the D-Stage and PC through a switch or router but a direct connection can be made
 - Launch the program IPSetup.exe
 - Any D-Mix or D-Stage products connected to the network will appear in the 'Select a Unit' dialog box
 - If the D-Stage does not show, check that the D-Stage is powered and that Ethernet activity led's are flickering
 - Press the 'Search Again' button to refresh the list
 - Set the IP address of the D-Stage to a unique address on your network
 - Commonly the Network mask will be set to 255.255.255.0
For example, Linksys routers have a base IP address of 192.168.1.1. On this type of network the D-Stage would be given a unique address in the range 192.168.1.1 to 192.168.1.999
 - Once the IP address is decided press the Set button to confirm
 - The D-Stage will reboot with the new IP address

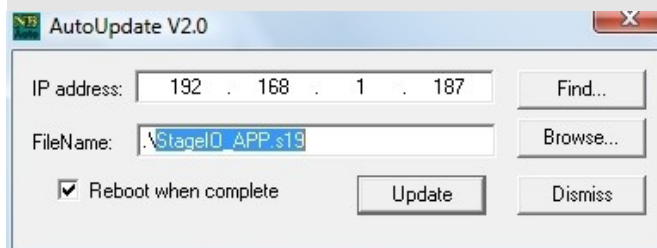


- 3
 - Press the 'Find' button in the AutoUpdate dialogue window to locate any D-Mix or D-Stage products on the network. Highlight the relevant D-Stage unit and press 'OK'. The IP address of the selected unit will be displayed.



Updating the Firmware

Launch the program AutoUpdate.exe to change the firmware in D-Stage.



- 4
 - Use the 'Browse' button to locate the file named StagelO_APP.s19
 - Make sure the check box 'Reboot when complete' is checked, and press the 'Update' button
 - After a few seconds a progress bar will indicate download is proceeding and the unit will re-boot
 - Connect to the Stagebox using the Stagebox.exe GUI and select Diagnostics to check the firmware update revisions