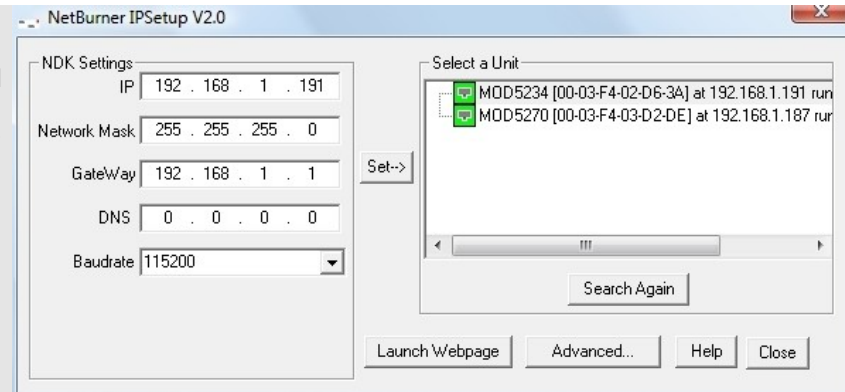


How to Upgrade the D-Mix Firmware

1

Managing IP Addresses

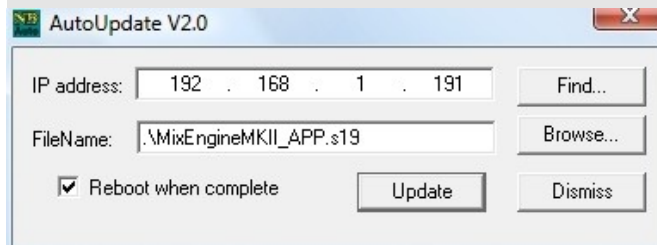
- Connect the D-Mix to the same network as the PC hosting the control programs
- It is common to connect the D-Mix and PC through a switch or router but a direct connection can be made
- Launch the program IPSetup.exe
- Any D-Mix or D-Stage products connected to the network will appear in the 'Select a Unit' dialog box
- If the D-Mix does not show, check that the D-Mix is powered and that Ethernet activity led's are flickering
- Press the 'Search Again' button to refresh the list
- Set the IP address of the D-Mix to a unique address on your network
- Commonly the Network mask will be set to 255.255.255.0
For example, Linksys routers have a base IP address of 192.168.1.1. On this type of network the D-Mix would be given a unique address in the range 192.168.1.1 to 192.168.1.999
- Once the IP address is decided press the Set button to confirm
- The D-Mix will reboot with the new IP address



2

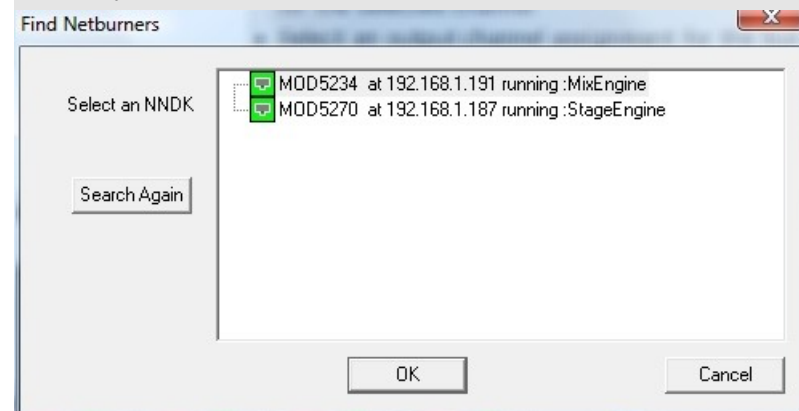
Updating the Firmware

Launch the program AutoUpdate.exe to change the firmware in D-Mix.



- Press the 'Find' button in the AutoUpdate dialogue window to locate any D-Mix or D-Stage products on the network. Highlight the relevant D-Mix unit and press 'OK'. The IP address of the selected unit will be displayed.

3



- Use the 'Browse' button to locate the file named MixEngineMKII_APP.s19
- Make sure the check box 'Reboot when complete' is checked, and press the 'Update' button
- After a few seconds a progress bar will indicate download is proceeding and the unit will re-boot
- Connect to the Mix Engine using the OSCMixClient.exe GUI and select Diagnostics to check the firmware update revisions.

4